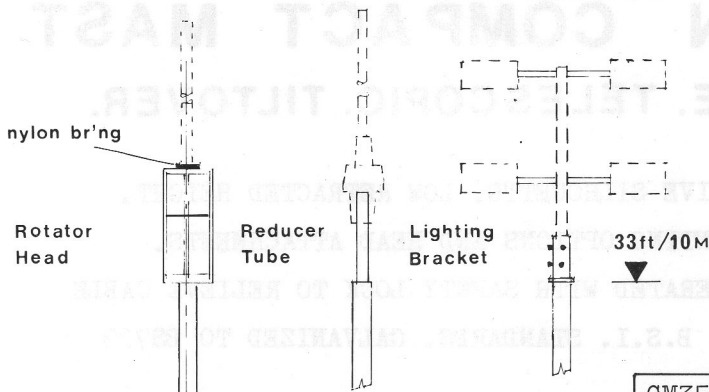


ALTRON CM35.

OPTIONAL HEAD FITTINGS.
RH1X Rotator Head.
RT1X Reducer Tube.
LB1X Lighting Bracket



TYPICAL ATTACHMENTS

CM35WM. WALL MOUNTED
GH1-Standard Ground Hinge.
WB12- Standard 12" Wall Brkt.
Optional Extras.
WB's 15", 18", and 21"
Post Hinge. Special Mountings

TYPICAL METHODS OF MOUNTING.

EXTEND

15.5ft/4.8M

13ft/4M

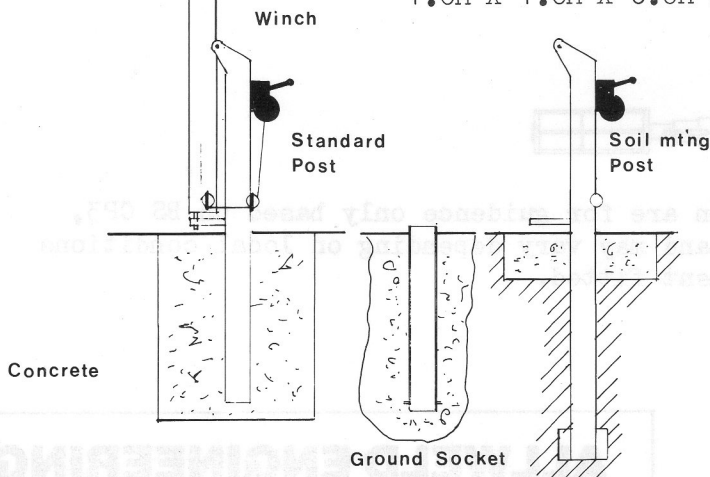
CM35PM. POST MOUNTED.
PM1 Ground Post. Standard.
Optional Extras.
GS1 ground socket.
BP1 Base Post
PX1 Soil Mounting Post

General Information.

Welding. Electronically controlled MIG to BS5135
Cables. Galvanized stranded steel to BS3530 test rated
Splicing. Mechanically applied ferrules to BS5281
Steel. High tensile to BS4360. Galvanized to BS729.

FOUNDATIONS.

PM1 Ground Post Mounting.
0.6M X 0.6M X 1.0M Deep.
Base Post.
1.0M X 1.0M X 0.6M Deep.



Post Mounted

Foundation dimensions may vary depending on soil conditions.

Wall Bracket

TILT

Winch

Post Hinge

Standard Hinge

Wall Mounted

